

CCBHCS ARE TRANSFORMING PENNSYLVANIA'S COMMUNITIES & NEED YOUR SUPPORT

Established under the Protecting Access to Medicare Act of 2014, Certified Community Behavioral Health Clinics (CCBHCS) provide a comprehensive range of mental health and addiction services to vulnerable individuals. In return for providing these services, CCBHCS receive a Medicaid reimbursement rate based on their anticipated costs of expanding access to care and treatment.

Pennsylvania was selected as 1 of 8 states to participate in the CCBHC program. Since July 2017, 8 CCBHCS located around the state have been delivering these important services.

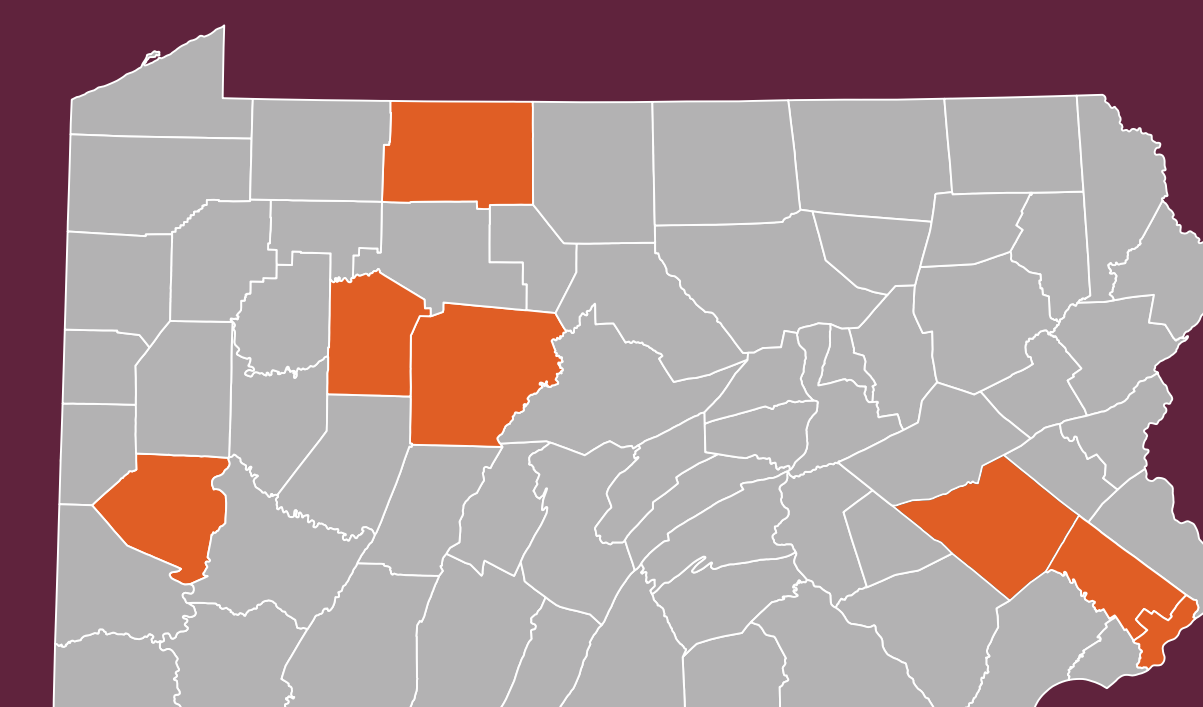
PA DEPT OF HUMAN SERVICES IS PROUD TO ANNOUNCE

8 Certified Community Behavioral Health Clinics are operating in PA

COUNTY LOCATIONS:

BERKS • CLEARFIELD • JEFFERSON
PHILADELPHIA (2) • MONTGOMERY
ALLEGHENY • MCKEAN

LIST OF FACILITIES: WWW.DHS.PA.GOV



Addressing Workforce Shortages & Creating Jobs

Amid a nationwide behavioral health workforce shortage, CCBHC status has helped clinics recruit and retain desperately needed staff.

In 5 months, 100% of CCBHCs nationwide hired new staff, for a total of over 1,160. They include

72 & **212**
psychiatrists & staff
with an addiction specialty or focus.

“Until the CCBHC, we were never able to attract a full-time psychiatrist. [We] have found it easier to attract all licensed professionals.”

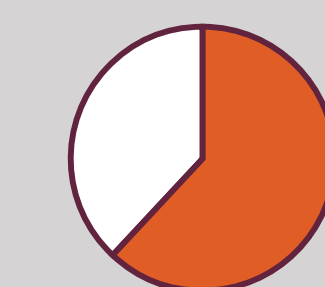


“We have an increased ability to hire at a wage that is comparable to our state/region, which allowed for increased workforce to more appropriately meet the needs in our rural area.”



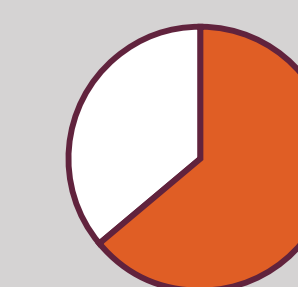
Fully Integrated Care with Substance Use Disorder Treatment

CCBHCS are, for many communities, the first integrated mental health and substance use treatment facility. CCBHCS are required to provide substance use treatment, which helps address the ongoing opioid crisis.



62%

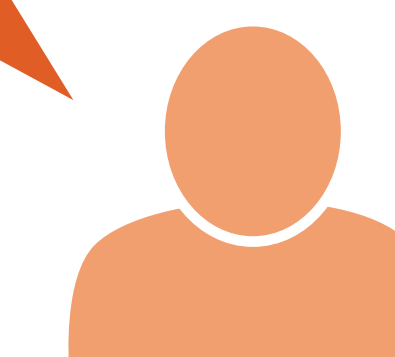
of all CCBHCs have trained staff or community partners in naloxone administration



64%

have hired Peer Recovery support specialists

“Prior to CCBHC we had no recovery services whatsoever. Now, we have opened addiction services and trained all mental health and chemical dependency providers in dual-diagnosis care, integrated treatment planning, substance use screening, and ASAM criteria.”

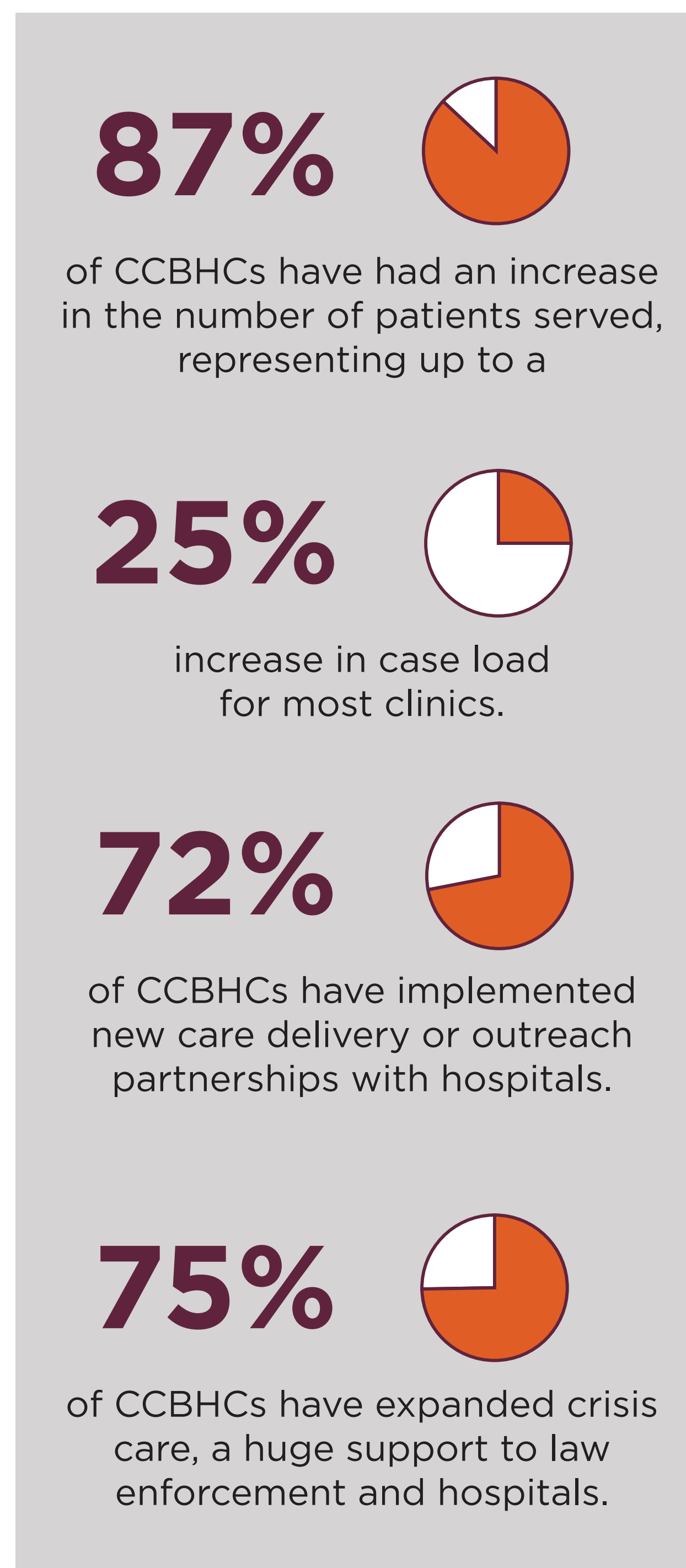


CCBHCS ARE TRANSFORMING PENNSYLVANIA'S COMMUNITIES & NEED YOUR SUPPORT

Increasing Access to Care for Healthier Communities: Saving on Hospitalization & Criminal Justice Costs

Flexibility provided by the CCBHC payment rate allows clinics to increase their staffing, increase their service offering, and engage beyond the 4 walls of the clinic. CCBHCs are reaching new clients who had either not previously been enrolled in treatment despite having a mental health or substance use need, or were newly referred to treatment for the first time. They are also creating new partnerships to reduce unnecessary hospitalizations and provide more evidence-based treatment to communities in need.

“Since becoming a CCBHC, we have had a ‘no turn away’ policy and are scheduling 300-400 more intakes per month. The organization had been essentially closed to community referrals for quite some time. This has set the stage for same day/next day access.”

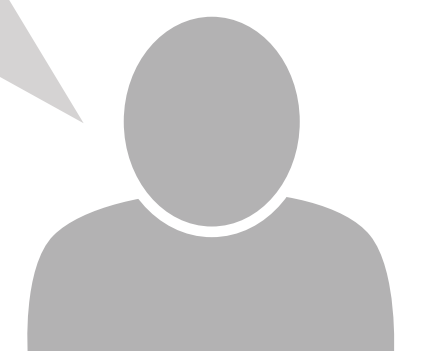


SPOTLIGHT ON PENNSYLVANIA

In Pennsylvania, 2 CCBHCs alone have been able to add

49 new positions, including **5** psychiatrists and **15** staff with an addiction specialty or focus

“[The biggest impact of the CCBHC program is] our ability to provide immediate access to care and to provide a holistic approach to treatment for co-occurring, dual diagnosis and all other mental health and drug and alcohol presentations.”



Future of the CCBHC program in Pennsylvania

CCBHCs are transforming Pennsylvania clinics' ability to serve people in their communities. Unfortunately, without Congressional action, the state's 8 CCBHCs will be forced to stop in their tracks when the program ends in 2019. The bipartisan **Excellence in Mental Health and Addiction Treatment Expansion Act (S. 1905/H.R. 3931)**, authored by Senators Roy Blunt and Debbie Stabenow and Representatives Doris Matsui and Leonard Lance, would extend Pennsylvania CCBHCs' activities for another year and expand the program to 11 other states. We urge Congress to take quick action to extend the life of this important program.

